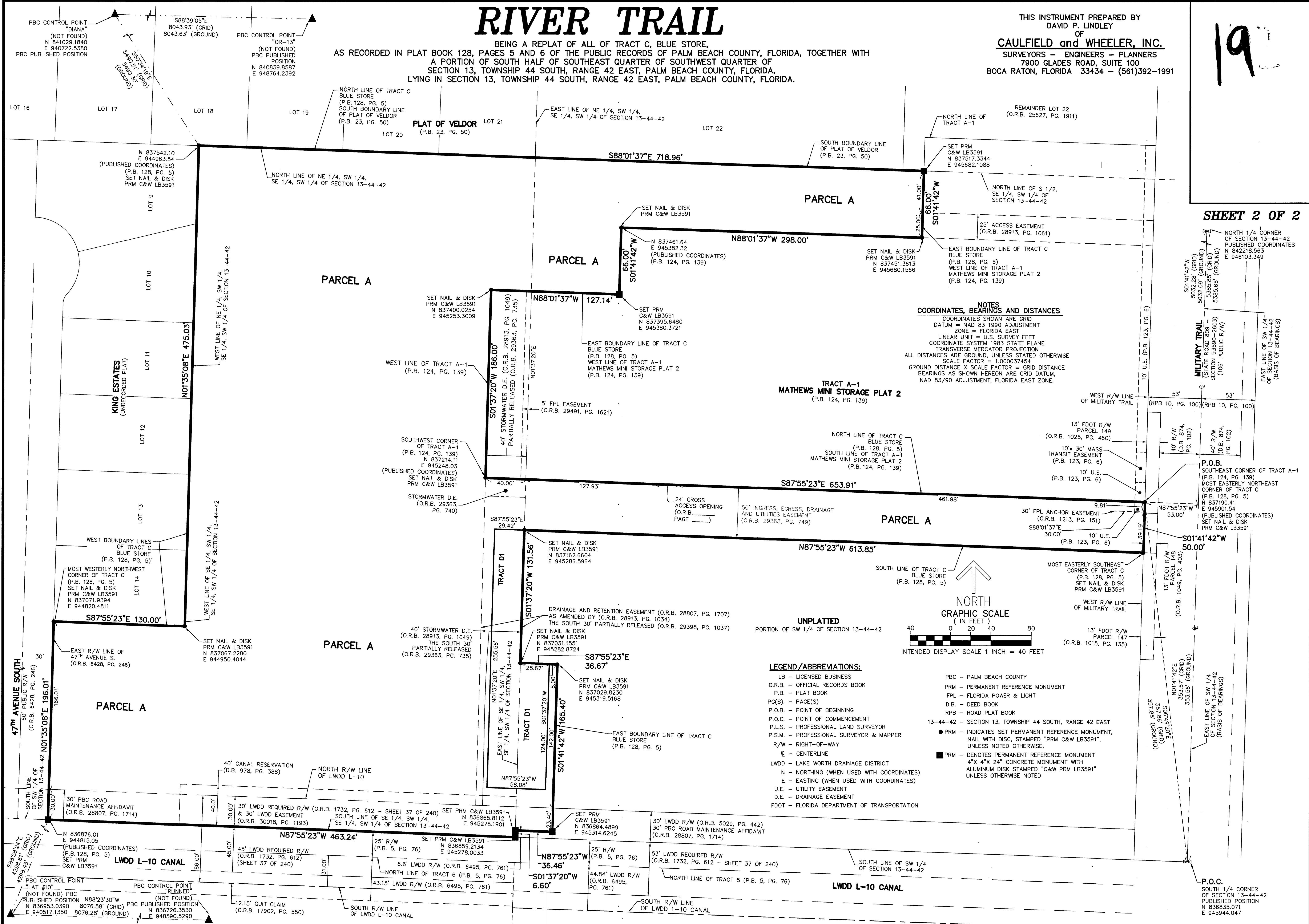


RIVER TRAIL

BEING A REPLAT OF ALL OF TRACT C, BLUE STORE,
AS RECORDED IN PLAT BOOK 128, PAGES 5 AND 6 OF THE PUBLIC RECORDS OF PALM BEACH COUNTY, FLORIDA, TOGETHER WITH
A PORTION OF SOUTH HALF OF SOUTHEAST QUARTER OF SOUTHWEST QUARTER OF
SECTION 13, TOWNSHIP 44 SOUTH, RANGE 42 EAST, PALM BEACH COUNTY, FLORIDA,
LYING IN SECTION 13, TOWNSHIP 44 SOUTH, RANGE 42 EAST, PALM BEACH COUNTY, FLORIDA.

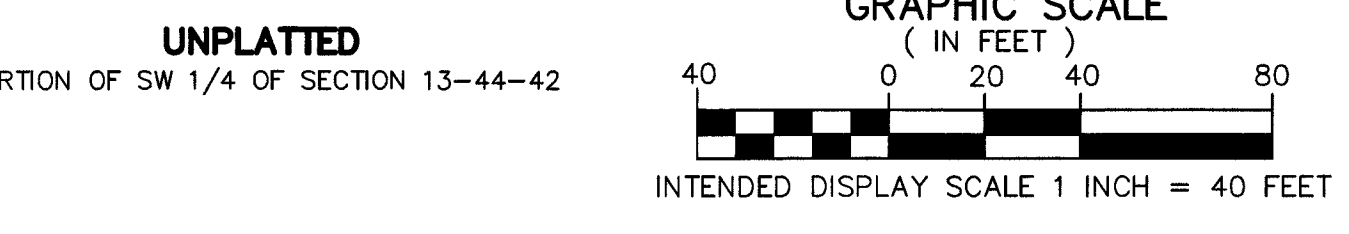
THIS INSTRUMENT PREPARED BY
DAVID P. LINDLEY
OF
CAULFIELD and WHEELER, INC.
SURVEYORS - ENGINEERS - PLANNERS
7900 GLADES ROAD, SUITE 100
BOCA RATON, FLORIDA 33434 - (561)392-1991

19



SHEET 2 OF 2

NOTES
COORDINATES, BEARINGS AND DISTANCES
COORDINATES SHOWN ARE GRID
DATUM = NAD 83 1990 ADJUSTMENT
ZONE = FLORIDA EAST
LINEAR UNIT = U.S. SURVEY FEET
COORDINATE SYSTEM 1983 STATE PLANE
TRANSVERSE MERCATOR PROJECTION
ALL DISTANCES ARE GROUND, UNLESS STATED OTHERWISE
SCALE FACTOR = 1.000037454
GROUND DISTANCE X SCALE FACTOR = GRID DISTANCE
BEARINGS AS SHOWN HEREON ARE GRID DATUM,
NAD 83/90 ADJUSTMENT, FLORIDA EAST ZONE.



LEGEND/ABBREVIATIONS:
LB - LICENSED BUSINESS
O.R.B. - OFFICIAL RECORDS BOOK
P.B. - PLAT BOOK
PG(S) - PAGE(S)
P.O.B. - POINT OF BEGINNING
P.O.C. - POINT OF COMMENCEMENT
P.L.S. - PROFESSIONAL LAND SURVEYOR
P.S.M. - PROFESSIONAL SURVEYOR & MAPPER
R/W - RIGHT-OF-WAY
CL - CENTERLINE
LWDD - LAKE WORTH DRAINAGE DISTRICT
N - NORTHING (WHEN USED WITH COORDINATES)
E - EASTING (WHEN USED WITH COORDINATES)
U.E. - UTILITY EASEMENT
D.E. - DRAINAGE EASEMENT
FDOT - FLORIDA DEPARTMENT OF TRANSPORTATION
PBC - PALM BEACH COUNTY
PRM - PERMANENT REFERENCE MONUMENT
FPL - FLORIDA POWER & LIGHT
D.B. - DEED BOOK
RPB - ROAD PLAT BOOK
13-44-42 - SECTION 13, TOWNSHIP 44 SOUTH, RANGE 42 EAST
● PRM - INDICATES SET PERMANENT REFERENCE MONUMENT, NAIL WITH DISC, STAMPED "PRM C&W LB3591", UNLESS NOTED OTHERWISE.
■ PRM - DENOTES PERMANENT REFERENCE MONUMENT 4" X 4" X 24" CONCRETE MONUMENT WITH ALUMINUM DISK STAMPED "C&W PRM LB3591" UNLESS OTHERWISE NOTED

P.O.C. SOUTH 1/4 CORNER OF SECTION 13-44-42 PUBLISHED POSITION N 836835.071 E 945944.047